

fine handknitting yarns

SEARCH

FREE KnitBits

Berroco Blog

Email This Page

>> [Preview](#) FREE
PATTERNS

Baby Ferris

knit in [Pure® Pima](#) | [color info](#)
Skill level: [Intermediate](#)

KNIT

[rollover to enlarge](#)[rollover to enlarge](#)WEB EXCLUSIVE
www.berroco.com

Baby Ferris is a miniature version of [Ferris](#). Both cardigans feature U-shaped plackets with ribbed stitches framed by graceful cables.



PDF Pattern Instructions

(If you can't open this PDF file you need Adobe Acrobat Reader. Get it [here](#).)

Shown in size 9 mos

SIZES

Directions are for infant's Newborn size (3 mos). Changes for sizes Small (6 mos), Medium (9 mos) and Large (12 mos) are in parentheses.

FINISHED MEASUREMENTS

Chest (closed) – 19(21-23-25)''

Length – 10(11-12-13)“

MATERIALS

4(5-6-7) Hanks **BERROCO PURE PIMA** (50 grs), #2220 Porcelain Green
 Straight knitting needles, sizes 4 (3.50 mm) and 6 (4.0025 mm) OR SIZE TO OBTAIN GAUGE
 Cable needle (cn)
 Three ½“ buttons
 1 St marker

GAUGE

22 sts = 4“; 26 rows = 4“ in St st on larger needles
 30 sts = 4“; 30 rows = 4“ in k2, p2 ribbing on smaller needles
 35 sts = 4“; 26 rows = 4“ in k1, p1 ribbing on larger needles

TO SAVE TIME, TAKE TIME TO CHECK GAUGE

LOWER BACK

With smaller needles, cast on 118(126-134-138) sts.

Ribbing: Row 1 (RS): K2, * p2, k2, rep from * across.

Row 2: P2, * k2, p2, rep from * across. Rep these 2 rows until piece measures 1“ from beg, end on RS. Change to larger needles and p the next row, dec 32(34-36-36) sts across – 86(92-98-102) sts. Work even in St st until piece measures 6(6½-7-7½)“ from beg, end on WS. K the next row, dec 32(34-34-32) sts across – 54(58-64-70) sts. Purl 1 row. Bind off.

BACK YOKE

With larger needles, cast on 54(58-64-70) sts. Work even in St st for 1“, end on WS.

Shape Armholes: Bind off 3(3-4-5) sts at beg of the next 2 rows – 48(52-56-60) sts. Dec 1 st each side every RS row 3 times – 42(46-50-54) sts. Work even until armholes measure 4(4½-5-5½)“, end on WS.

Shape Shoulders and Neck: Next Row (RS): Bind off 3(2-2-4) sts, k until there are 10(13-13-13) sts on RH needle, join another ball of yarn and bind off center 34 16(16-20-20)sts, k to end. Working both sides at once, bind off 3(2-2-4) sts at beg of the next row, then 2(3-3-3) sts at beg of the next 6 rows. AT THE SAME TIME, dec 1 st at each neck edge EVERY row 4 times.

LEFT FRONT

With smaller needles, cast on 58(62-66-70) sts. Work in ribbing same as lower back for 1“, end on RS. Change to larger needles and p the next row, dec 14(16-18-20) sts across – 44(46-48-50) sts. Work even in St st until piece measures 2“ from beg, end on WS. Dec 1 st at beg of the next row, then at same edge every ½“ 6(6-6-5) times more. AT THE SAME TIME, when piece measures 3(3½-4-4½)“ from beg (before all decs have been worked), end on WS.

Establish Chart: Next Row (RS): Work to last 26 sts, place marker, work Row 1 of **chart** 1 to end. Following **chart** 1 over 26 sts at front edge, keep remaining sts in St st and continue to dec at beg of RS rows as before. When all decs have been completed, work even in pat as established on 37(39-41-44) sts until piece measures 6(6½-7-7½)“ from beg, end on WS.

Shape Armhole: Bind off 3(3-4-5) sts, work to end – 34(36-37-39) sts. Dec 1 st at armhole edge every RS row 3 times – 31(33-34-36) sts. Work even until armhole measures 2(2½-3-3½)“, end on RS.

Shape Neck: Next Row (WS): Bind off 8(8-9-9) sts, work to end – 23(25-25-27) sts. Bind off 8 sts at neck edge once more, then dec 1 st at neck edge every RS row 6 times. When all decs have been completed, work even on 9(11-11-13) sts until armhole measures 4(4½-5-5½)“, end on WS. Bind off 3(2-2-4) sts at armhole edge once, then 2(3-3-3) sts 3 times for shoulder.

RIGHT FRONT

Work to correspond to left front, reversing all shaping and placement of **chart**. Use **chart** 2 instead of **chart** 1. Work side decs at end of RS rows. Work **chart** 2 over 26 sts at beg of RS rows. Bind off for armhole on WS row. Work armhole decs at end of RS rows. Bind off for neck on RS rows. Work neck decs at beg of RS rows. Bind off for shoulder on WS rows.

SLEEVES

Cuff: With larger needles, cast on 6 sts. Work even in St st for 5", end on WS. Bind off. With RS facing, using larger needles, pick up and k44(44-50-50) sts along one long edge of cuff. Beg with a p row, work even in St st until sleeve measures 6(7-8-9)" from picked up sts, end on WS.

Shape Cap: Bind off 3(3-4-5) sts at beg of the next 2 rows – 38(38-42-40) sts. Dec 1 st each side every RS row 13(13-13-7) times, then every 4th row 0(0-0-3) times, end on WS – 12(12-16-20) sts. Bind off 3(3-2-2) sts at beg of the next 2 rows. Bind off remaining 6(6-12-16) sts.

FINISHING

Sew bound-off edge of lower back to cast-on edge of back yoke. Sew shoulder seams.

Neckband: With RS facing, using larger needles, beg at right front edge, pick up and k80(80-84-84) sts around entire neck edge. Beg with a k row, work 3 rows in Reverse St st, end on WS. Bind off.

Left Frontband: With RS facing, using larger needles, beg at top of neckband, pick up and k46(50-56-60) sts along left front edge. Complete same as neckband.

Right Frontband: With RS facing, using larger needles, beg at lower edge, pick up and k17(19-22-25) sts along right front edge to beg of charted pat; pick up and k1(1-1-2) sts, cast on 2 sts, skip 1/2" on sweater front, * pick up and k6(6-7-7) sts, cast on 2 sts, skip 1/2" on sweater front, rep from * twice more, pick up and k2(4-4-4) sts – 46(50-56-60) sts. Complete same as left frontband. Sew in sleeves. Sew side, sleeve and cuff seams. Sew on buttons.

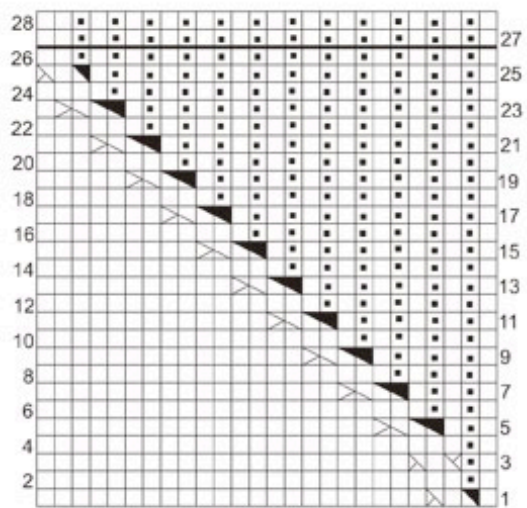


CHART 2

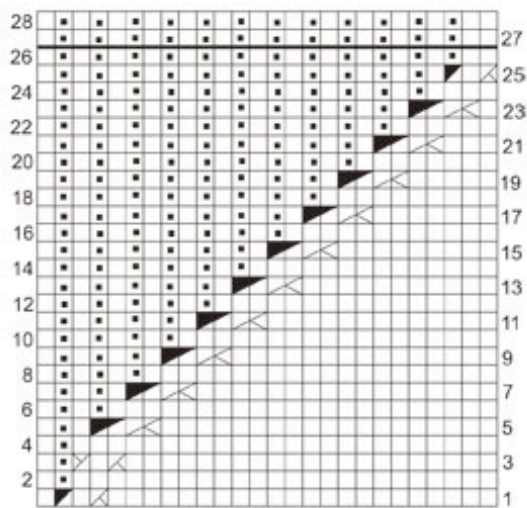


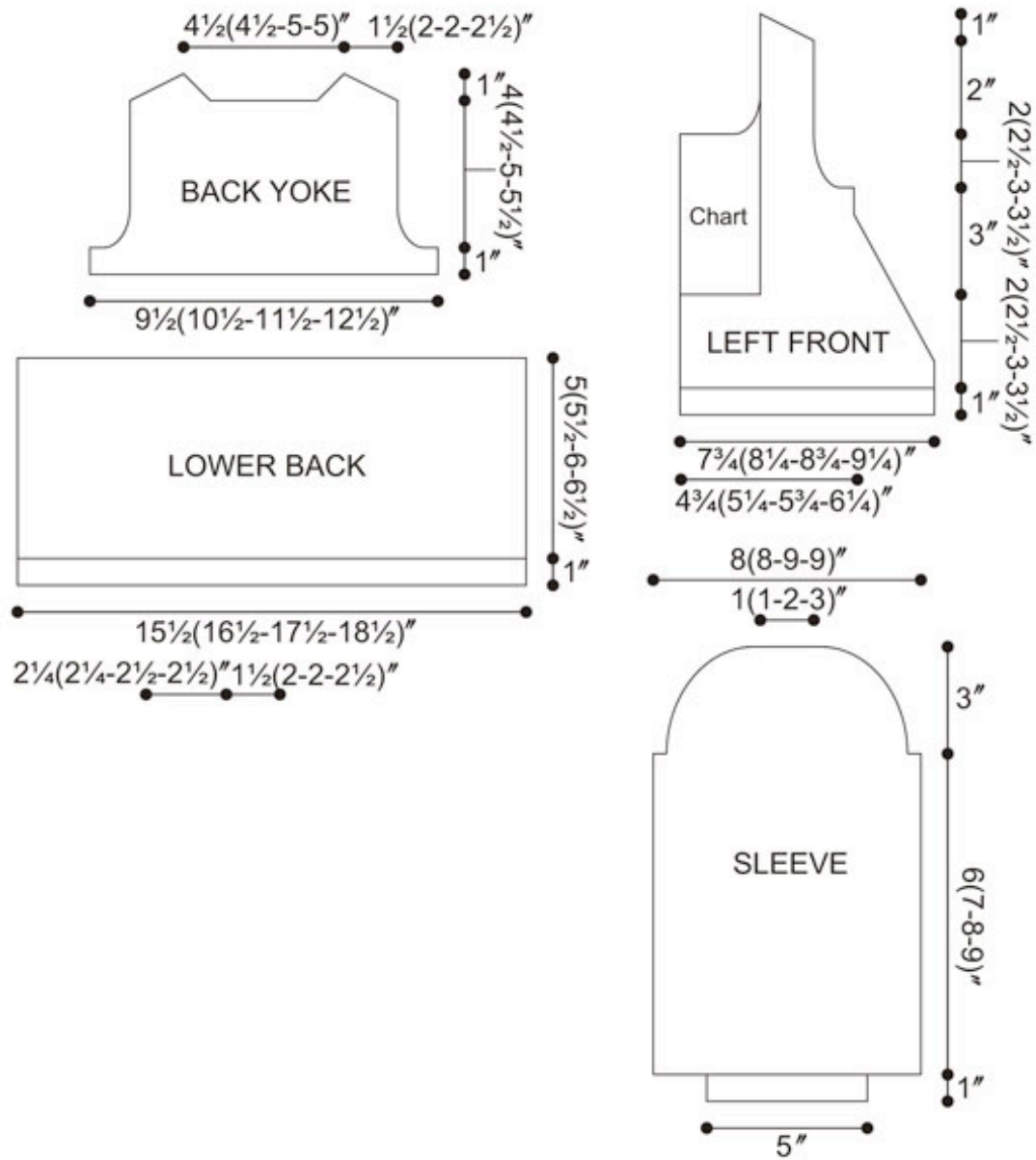
CHART 1

KEY TO CHARTS

- K on RS, p on WS
- P on RS, k on WS
- ⊗ Sl 1 st to cn and hold in BACK, k2, k1 from cn
- ⊗ Sl 2 sts to cn and hold in FRONT, k1, k2 from cn
- ⊗ Sl 1 st to cn and hold in BACK, k2, p1 from cn
- ⊗ Sl 2 sts to cn and hold in FRONT, p1, k2 from cn
- ⊗ Sl 2 sts to cn and hold in BACK, k2, then k1, p1 from cn
- ⊗ Sl 2 sts to cn and hold in FRONT, p1, k1, then k2 from cn

HOW TO USE CHART

Work from right to left on RS rows and from left to right on WS rows.
When Row 26 has been completed, rep Rows 27 and 28 for Pat St.



[Home](#) | [Yarn Shops](#) | [Yarns](#) | [Free KnitBits®](#) | [New This Season](#) | [Free Patterns](#) | [Blog](#) | [Multimedia](#)
[Pattern Corrections](#) | [Abbreviations & Terms](#) | [Links](#) | [Handeze® Glove](#) | [Scarf Central](#)
[About Us](#) | [Privacy Statement](#) | [FAQs](#) | [Contact Us](#)

Berroco, Inc. P.O. Box 367, 14 Elmdale Road, Uxbridge, MA 01569-0367 USA
 copyright 2009 Berroco