

Kombu

Designed by the Berroco Design Team



finished measurements

Lower Edge – 40 (44, 48, 52, 56, 60)"

Length – 26 (26½, 28, 28½, 30¼, 31)"

Note: This garment was designed with approximately 10" of ease. Due to the dolman sleeves, the bust is very roomy, so please go by the lower edge measurement when selecting your size.

yarn

BERROCO ULTRA WOOL (100 grs): 5 (6, 6, 7, 8, 9) balls #33158 Rosemary

needles and notions

29" circular needles, sizes 6 (4.00 mm) and 8 (5.00 mm) *or size to obtain gauge*

16" circular needles, sizes 6 (4.00 mm) and 8 (5.00 mm)

1 Set (4) double pointed needles (dpns), size 6 (4.00 mm)

Cable needle (cn)

Spare 29" circular needle, size 8 (5.00 mm)

5 st markers (1 a different color for beg-of-rnd)

gauge

18 sts and 24 rnds = 4" in St st on larger needle

To save time, take time to check gauge

Berroco Ultra® Wool

Find this Yarn 

BERROCO®



www.berroco.com

NOTE: We recommend using yarns called for in our instructions. Every effort has been made to ensure that directions contained in this book are accurate and complete, however errors do occur. We cannot be responsible for variance of individual knitters, human or typographical errors.

All pattern PDFs are updated when corrections are made. In the event of finding an error, please make sure you've downloaded the most recent version.

LEAF PATTERN

(Worked over 19 sts)

Note: When working this pattern flat, work all even numbered (WS rows) as purl instead of knit.

Rnd 1: K4, k2tog, p3, yo, k1, yo, p3, SSK, k4.

Rnd 2 and all even numbered rnds: Knit.

Rnd 3: K3, k2tog, p3, [k1, yo] twice, k1, p3, SSK, k3.

Rnd 5: K2, k2tog, p3, k2, yo, k1, yo, k2, p3, SSK, k2.

Rnd 7: K1, k2tog, p3, k3, yo, k1, yo, k3, p3, SSK, k1.

Rnd 9: K2tog, p3, k4, yo, k1, yo, k4, p3, SSK.

Rnd 11: K1, yo, p3, SSK, k7, k2tog, p3, yo, k1.

Rnd 13: K2, yo, p3, SSK, k5, k2tog, p3, yo, k2.

Rnd 15: K3, yo, p3, SSK, k3, k2tog, p3, yo, k3.



Rnd 17: K4, yo, p3, SSK, k1, k2tog, p3, yo, k4.

Rnd 19: K5, yo, p3, CDD, p3, yo, k5.

Rnd 20: Knit.

Rep these 20 rnds for Leaf Pattern.

NOTE

This garment is worked in one piece in the round from the neck down.

SWEATER

Neckband: With smaller 16" circular needle, cast on 102 sts. Place different colored marker and join for working in the round.

Set-Up Rib: Rnd 1: * K3, p3, rep from * around.

Rep this round until piece measures 3" from beginning. Change to larger 16" circular needle.

Establish Leaf Pattern: Rnd 1: * [K16, pm] twice, work Rnd 1 of Leaf Pattern over 19 sts, rep from * once more.

Note: As you work incs, when there are too many sts to fit comfortably on 16" circular needle, change to larger 29" needle.

Inc Rnd: * Knit to 3 sts before first marker, yo, k1, yo, k2, sm, k2, yo, k1, yo, knit to next marker, sm, work Leaf Pattern to next marker, sm, rep from * once more – 8 sts inc'd (110 sts).

Next Rnd: Knit to first marker, sm, knit to next marker, sm, work Leaf Pattern to next marker, sm,

knit to next marker, sm, knit to next marker, sm, work Leaf Pattern to end. Rep the last 2 rounds 33 (35, 37, 39, 41, 43) times more, end with Next Rnd – 374 (390, 406, 422, 438, 454) sts.

Divide for Armholes: Next Rnd: Using spare needle, knit to first marker, remove marker; turn and purl to beg-of-rnd marker, [purl to next marker] twice, remove last marker and turn, leaving 187 (195, 203, 211, 219, 227) sts unworked on original needle for front – 187 (195, 203, 211, 219, 227) sts.

Note: You are now working back and forth (flat) on the back only. Work 2 rows even in pattern as established.

Back: * Dec Row (RS): K3, k2tog, work to last 5 sts, SSK, k3 – 2 sts dec'd. Work even for 3 rows more, end on WS. Rep from * 5 (5, 6, 6, 7, 7) times more, end on WS – 175 (183, 189, 197, 203, 211) sts. Work even if necessary until armhole measures 4½ (4½, 5, 5, 5½, 5½)", end on WS. Break off yarn and leave sts on spare needle.

Front: With RS facing, join yarn to first st on original needle; knit to first marker, work Leaf Pattern to next marker, knit to end – 187 (195, 203, 211, 219,



227) sts. Turn and work 1 WS row. Complete as for back, ending on WS with same row of Leaf Pattern – 175 (183, 189, 197, 203, 211) sts.

Joining Row (RS): Working across Front sts, k3, k2tog, knit to first marker, sm, work Leaf Pattern to next marker, sm, knit to last 5 sts, SSK, k3, pm, with same ball of yarn, working across Back sts, k3, k2tog, knit to next marker, sm, work Leaf Pattern to next marker, sm, knit to end, place different colored marker for new beg-of-rnd and join for working in the round – 346 (362, 374, 390, 402, 418) sts. Work 1 round even.

Dec Rnd: * K3, k2tog, knit to next marker, sm, work Leaf Pattern to next marker, sm, knit to 5 sts before next marker, SSK, k3, sm, rep from * once more – 4 sts dec'd. Rep Dec Rnd EVERY round 39 (39, 30, 30, 24, 24) times more, then every other round 0 (0, 7, 7, 11, 11) times – 186 (202, 222, 238, 258, 274) sts. Work even if necessary until piece measures 6 (6, 6½, 6½, 7, 7)" above joining row. Change to smaller 29" circular needle.

Next Rnd: * Knit to next marker, remove maker, [k1, k2tog] twice, k1, SSK, [k1, k2tog] twice, k1, SSK,

k1, remove marker, knit to next marker, sm, rep from * once more – 180 (196, 216, 232, 252, 268) sts (6 sts dec'd). * Purl 1 round, knit 1 round, rep from * 5 times more (12 rnds total). Bind off loosely purlwise.

FINISHING

Armhole Bands: With RS facing, using dpns,

begin at center of underarm, pick up and knit 42 (42, 46, 46, 50, 50) sts around entire armhole edge. Divide sts onto 3 needles, place marker and join for working in the round. Work even in Garter St (purl 1 round, knit 1 round) for 1", end with a knit round. Bind off purlwise. Weave in all ends and block as desired.

KEY TO CHART

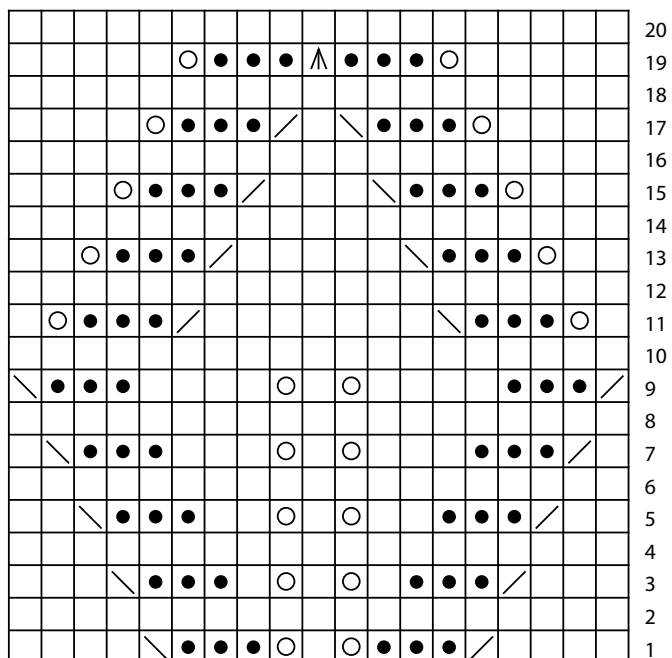
- knit
- purl
- yarn over
- k2tog
- SSK
- CDD

CHART NOTES

When working in the round, work from right to left on all round. All even numbered rounds are knit.

When working flat, work from right to left on RS rows and from left to right on WS rows. All even numbered (WS) rows are purled.

KOMBU CHART



ABBREVIATIONS & TERMS

beg: beginning

CDD (centered double decrease): Slip 2 together (as if to k2tog), knit 1, pass the 2 slipped stitches over

dec: decrease

dpn(s): double pointed needle(s)

inc: increase

k: knit

k2tog: knit 2 stitches together

p: purl

pm: place marker

rep: repeat

rnd(s): round(s)

RS: right side

sm: slip marker

SSK: Slip 2 stitches knitwise, insert point of left hand needle through fronts of these 2 stitches and knit 2 together.

st(s): stitch(es)

Stockinette stitch (St st): Knit 1 row, purl 1 row alternately when working back and forth in rows. The knit side is the right side of work. Knit EVERY round when working in the round.

WS: wrong side

yo: yarn over

*Love Berroco patterns?
Sign up for our **KnitBits®** newsletter.*

