

Ceridwen

Designed by Alison Green



Skill level: Intermediate
One size

finished measurements

Approximately 62" across top x
11" down center (at widest point)

yarn

BERROCO QUECHUA (50 grs): 3
hanks #1354 Palace

needles and notions

29" or longer circular needle, size
7 (4.50 mm) or size to obtain
gauge

Note: You may want to knit
the edging on a shorter length
circular needle. Also, you may
want to use a needle 1–2 sizes
larger for binding off.

2 st markers

gauge

16 sts and 40 rows = 4" in Garter
St (after blocking)

To save time, take time to check
gauge

Berroco Quechua™

Find this Yarn 



BERROCO®

www.berroco.com

NOTE: We recommend using yarns called for in our instructions. Every effort has been made to ensure that directions contained in this book are accurate and complete, however errors do occur. We cannot be responsible for variance of individual knitters, human or typographical errors.

All pattern PDFs are updated when corrections are made. In the event of finding an error, please make sure you've downloaded the most recent version.

NOTE

Edging of shawl is worked first, then sts are picked up along side edge for shawl body. Shawl Body is shaped using short rows.

SHAWL EDGING

Cast on 21 sts. Knit 1 row on WS.

Begin working from chart. Work Rows 1–36 twelve times total (432 rows). Bind off purlwise and fasten off.



SHAWL BODY

With RS facing, pick up and knit 290 sts along straight side of edging (approximately 2 sts for every 3 rows).

Row 1 (WS): K101, pm, k88, pm, k101.

Short Rows: Row 2: Knit to second marker, sm, k1, turn.

Row 3: Sl 1 wyif, knit to marker, sm, k1, turn.

Row 4: Sl 1 wyib, sm, knit to next marker, remove marker, SSK, k2, pm, k1, turn.

Row 5: Sl 1 wyif, sm, knit to next marker, remove marker, SSK, k2, pm, k1, turn.

Rep Rows 4 and 5 until only 4 sts remain unworked on each side.

Next Row (RS): Sl 1 wyib, sm, knit to next marker, remove marker, SSK, knit to end.

Next Row (WS): Knit to marker, remove marker, SSK, knit to end.

Knit 2 rows.

Bind-Off Row (RS): Working loosely and/or with a larger needle, * k2tog tbl, place resulting st back onto LH needle, rep from * until all sts have been bound off. Fasten off last st.

FINISHING

Weave in all ends and block as desired.



ABBREVIATIONS & TERMS

- k:** knit
- k2tog:** knit 2 stitches together
- LH:** left hand
- pm:** place marker
- rep:** repeat
- RS:** right side
- sl:** slip
- sm:** slip marker
- SSK:** Slip 2 stitches knitwise, insert point of left hand needle through fronts of these 2 stitches and knit 2 together.
- st(s):** stitch(es)
- tbl:** through back loop(s)
- WS:** wrong side
- wyib:** with yarn in back
- wyif:** with yarn in front

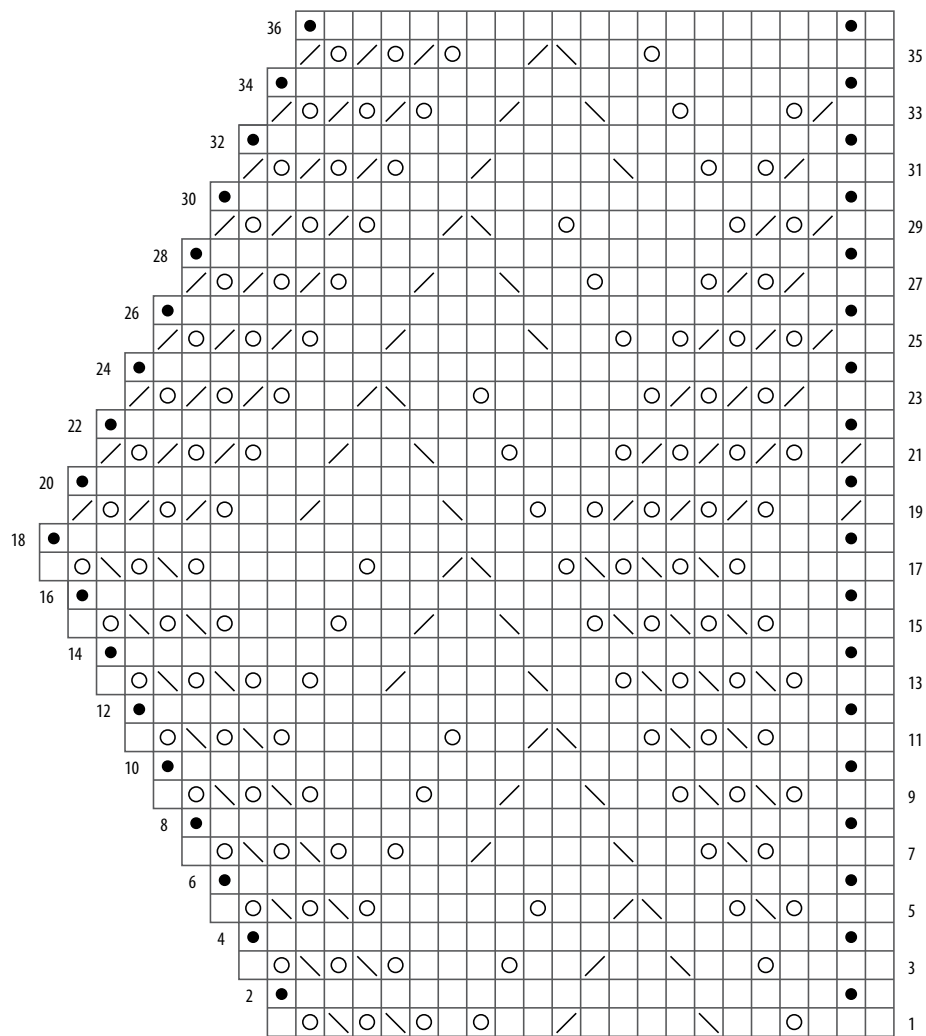


CHART KEY

- knit on RS; purl on WS
- knit on WS
- yarn over
- k2tog
- SSK

CHART NOTES

Work from right to left on RS rows and from left to right on WS rows.

Love Berroco patterns?
Sign up for our **KnitBits®** newsletter.

