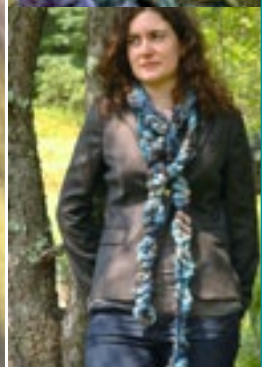


Berroco Link™

FREE PATTERNS



Berroco Link™

Huge and colorful, Link is full of character. Instantly gratifying when worked on size 35 or 50 needles, this yarn creates eye-catching accessories.



Learn more about [Berroco Link](#)



Find your [next project](#)



FREE weekly e-newsletter [KnitBits®](#)



katsura | *knit in Berroco Link™*



katsura

Skill level: Easy

One size

FINISHED MEASUREMENTS

Approximately 5" wide x 52" around

MATERIALS

1 Hank **BERROCO LINK** (200 grs), #3250 Sundown
Straight knitting needles, size 35 (20.00 mm) OR SIZE
TO OBTAIN GAUGE

GAUGE

4 sts = 4"; 6 rows = 4" in St st

TO SAVE TIME, TAKE TIME TO CHECK GAUGE

COWL

With straight needles, cast on 5 sts.

Row 1 (WS): P3, yo, p2 tog.

Row 2: K3, yo, SSK.

Rep these 2 rows until piece measures approximately 52" from beg, end on WS. Bind off, dropping center st so that it unravels back to beginning.

FINISHING

Sew cast-on and bound-off ends of cowl together.
Knot all ends to prevent unraveling.

kaisou | crocheted in Berroco Link™



kaisou

Skill level: Easy

One size

FINISHED MEASUREMENTS

Approximately 5" wide x 32" around

MATERIALS

1 Hank **BERROCO LINK** (200 grs), #3222 Earthen

Crochet hook, size S-35

COWL

With crochet hook, ch 31.

Rnd 1: Sc in 2nd ch from hook, * ch 3, skip 3 ch, sc in each of the next 3 ch, rep from *, end ch 3, skip 3 ch, sc in each of the last 3 ch, join with a sl st in first sc. DO NOT turn.

Rnd 2: ch 1, skip first sc, * skip 1 sc, 5 dc in next ch-3 sp, skip 1 sc, sc in next sc, rep from *, end sc in beg ch-1.

Rnd 3: Ch 3, skip (1 sc and 1 dc), * sc in each of the next 3 dc, ch 3, skip (1 dc, 1 sc and 1 dc), rep from *, join with a sl st in first ch of beg ch-3. Fasten off. Knot ends to prevent unraveling.

chu-rippu | *knit in Berroco Link™*



chu-rippu

Skill level: Easy

One size

FINISHED MEASUREMENTS

Approximately 20" around x 9" high (unrolled)

MATERIALS

1 Hank [BERROCO LINK](#) (200 grs), #3244 Oasis
Straight knitting needles, size 35 (20.00 mm) OR SIZE
TO OBTAIN GAUGE

1 Large spare needle

GAUGE

4 sts = 4"; 6 rows = 4" in St st

TO SAVE TIME, TAKE TIME TO CHECK GAUGE

HAT

With straight knitting needles, cast on 22 sts. Work in double knitting as follows:

Row 1: * sl 1 purlwise with yarn in front, k1, rep from * across.

Rep this row until at least 7 feet of yarn remain (no less).

Prepare to Bind Off: Using large spare needle, * sl the first st and hold in back; with size 35 needle, sl the next st and hold in front; rep from * until 11 sts are on spare needle held in back and 11 sts are on size 35 needle and held in front. Sl the 11 sts on size 35 needle to the other size 35 needle so needle faces your right.

Bind Off: * K1, wrap yarn around RH needle and slip st just knit over it as if binding off; rep from * until 21 sts have been bound off. K1, cut yarn and pull through last st on needle. Knot all ends to prevent unravelling.

gureipu | crocheted in Berroco Link™



gureipu

Skill level: Intermediate

One size

FINISHED MEASUREMENTS

Approximately 2" wide (at widest points) x 106" long

MATERIALS

1 Hank [BERROCO LINK](#) (200 grs), #3253 Eventide

Crochet hook, size S-35

SCARF

With crochet hook, * ch 3, work 1 tr into first ch, rep from * until you run out of yarn. Pull end through last loop. Knot ends to prevent unraveling. Knot each end of scarf.